

4. Stimme in Es

Auf, zum Bodensee!

Stephan Hutter

Trio

Measures 1-70. The score is written for a single melodic line on a treble clef staff. It features various dynamics (*f*, *mf*, *p*), articulations (accents, slurs), and phrasing marks (A, B, C, D, E). The key signature has one sharp (F#) and the time signature is common time (C).

2

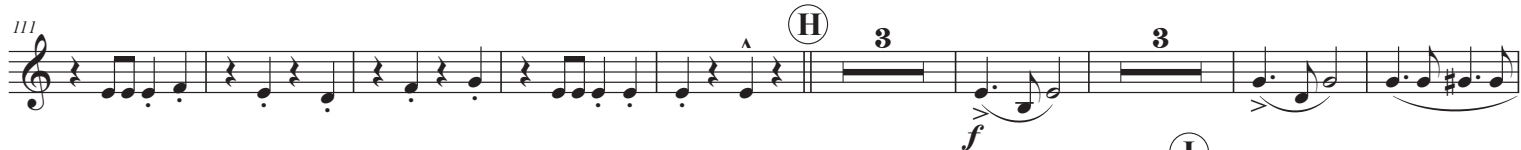
80



90



111



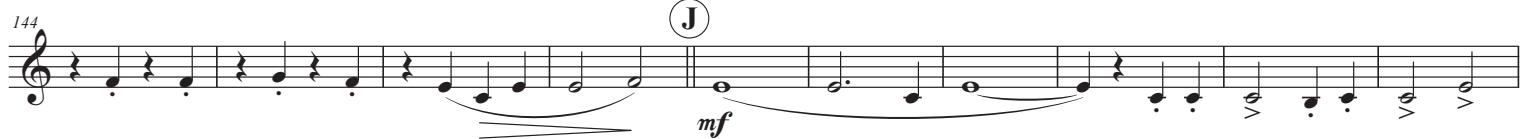
125



134



144



154

